



# MONTHLY MEMBERSHIP PROGRESS REPORT

District 322C1

Results as of: 5/31/2016

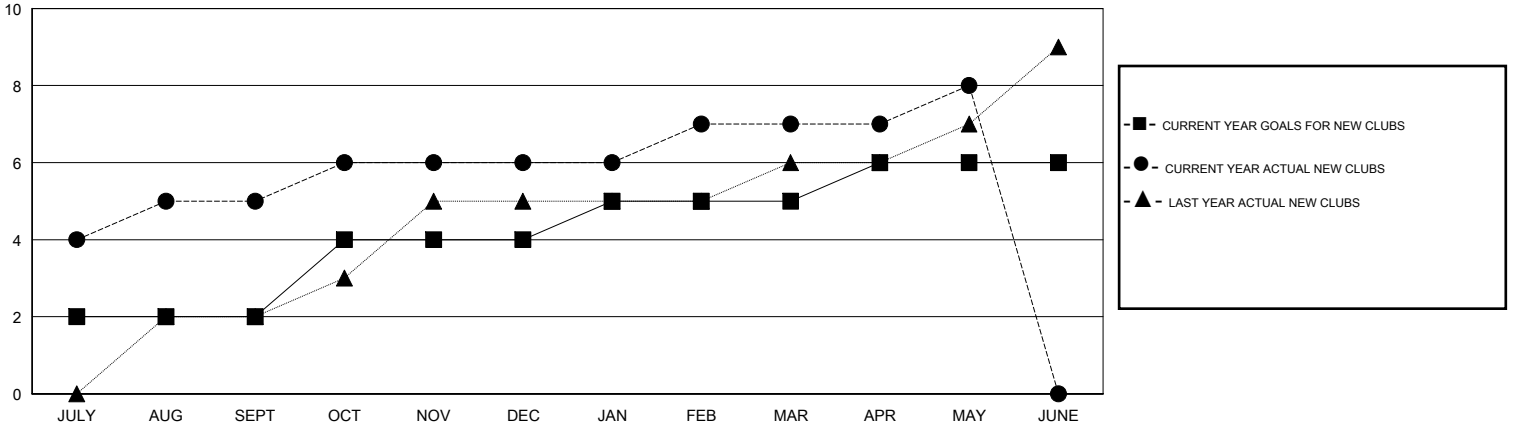
GMT: NAZMUL HAQUE

LOCATION INDIA

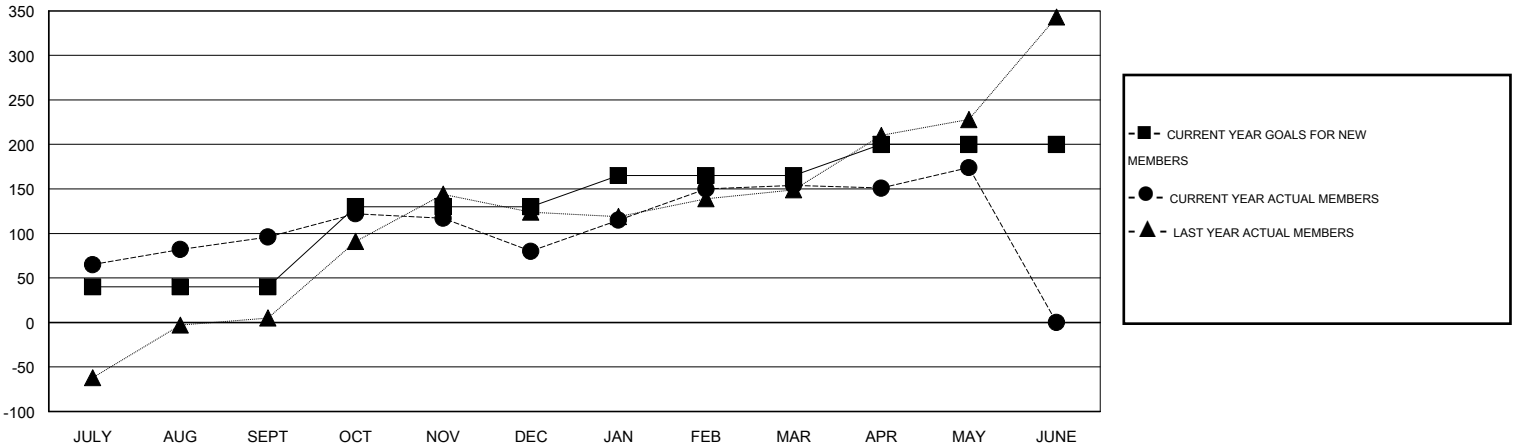
GMT CA 6

Clubs					Members				
RESULTS FOR 2015-2016					RESULTS FOR 2015-2016				
QUARTER	NEW CLUB GOAL	NEW CLUBS	DROPPED CLUBS	NET GAIN/LOSS	QUARTER	NEW MEMBER GOAL	CHARTER AND NEW MEMBERS ADDED	DROPPED MEMBERS	NET GAIN/LOSS
JULY/AUG/SEPT	2	5	1	4	JULY/AUG/SEPT	40	266	170	96
OCT/NOV/DEC	2	1	1	0	OCT/NOV/DEC	90	94	110	-16
JAN/FEB/MAR	1	1	0	1	JAN/FEB/MAR	35	99	25	74
APR/MAY/JUNE	1	1	0	1	APR/MAY/JUNE	35	73	53	20

GOALS AND ACTUAL NEW CLUBS CUMULATIVE



GOALS AND ACTUAL MEMBERS CUMULATIVE



DROPPED CLUBS: 2	82 CLUBS OF 102 ADDED 1 OR MORE NEW MEMBERS	<u>GENDER DISTRIBUTION</u>			
<u>DROPPED MEMBERS</u>		MALE	2,428 (76.33%)		
DECEASED	7	FEMALE	753 (23.67%)		
CLUB CANCELLED	42	<a href="#">CLICK HERE FOR HEALTH ASSESSMENT DATA</a>			
OTHER	309			FAMILY UNIT MEMBERS	1,457
TOTAL	358			HEAD OF HOUSEHOLD	626
		NON-HEAD OF HOUSEHOLD	831		